

Estopatch RSR

Polymer Modified Fast Setting patching material for Pavement Repair

Description

Estopatch RSR is a two-component polymer modified fast setting patching material which suitable to be used for concrete, asphalt, and semi-rigid pavement repair application. **Estopatch RSR** exhibits good flowability, elasticity and bonding with existing pavement.

Uses

Estopatch RSR is suitable for repair application such as:

- Loading bay area
- Parking area
- Factory floor

Advantages

- Good flow ability & workability
- Easy to mix and apply (Than resin products)
- Quick setting
- User friendly – Simple, full pack mixing to ensure the performance characteristics are achieved
- Good adhesion to the road
- Non-primer requires
- Cost effective

Physical Properties

		Test example
Color		Grey or Black
Setting time, mins 30°C	<180	42
Flowability, mm ASTM C230 After mixing	160 – 250	226
Pull-off Strength, N/mm ² ASTM D4541 7 days	1.0 ± 0.4	1.08

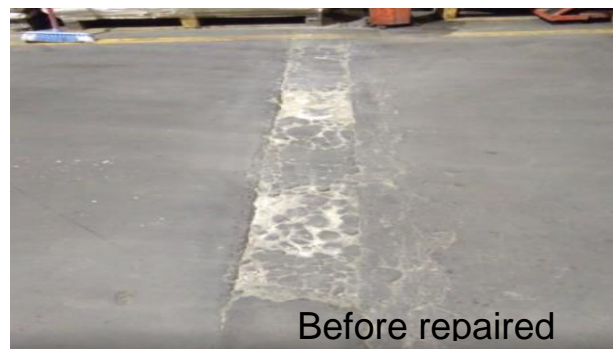
Application Instructions

(1) Surface Preparation

The repair area shall be thoroughly clean, free of laitance, oil, dust, grease, plaster, paint, corrosion and any other deleterious substances. Mark the area for repair using tape.

(2) Mixing

Pre-mix Estopatch RSR Part A (liquid) using mechanical hand mixer with slow speed for 5 second. Add one full 5 kg bag of Estopatch RSR Part B (powder) gradually to the liquid and mix with speed 3000 – 3600 rpm for 30 – 60 second until a smooth consistency mix is achieved. Used the material within the recommended pot life below than 15 minutes.



(3) Placing

The mixed material should be placed within 10 minutes of mixing in order to gain full benefit of fluidity. The surface should be leveled using a squeegee, trowel or wood float. If a textured surface is required, this can be achieved using a suitable roller or brush as the material begins to stiffen. **Estopatch RSR** can be applied between 2 to 10 mm thicknesses in a single application.

(4) Curing

After the application, the surface should be covered by a plastic sheet and a wooden board to avoid the dry out by the sun light and the damage by the forklift and vehicles. Generally, it should be cured for at least 1 day before opening the repaired area.

200803

Packing & Size

Estopatch RSR

Packing	6 kg set	30 kg set
Part A	1kg pail	5kg pail
Part B	5kg bag	25kg bags



Precaution

Estopatch RSR should not come in contact with the skin and eyes, or be swallowed. Ensure adequate ventilation and avoid inhalation of vapours. If contact with eyes, rinse immediately with plenty of clean water and seek medical advice. If swallowed, seek medical attention immediately and do not induce vomiting.

Additional Information

Denka Construction Solutions Malaysia Sdn Bhd offers a wide range of complementary products, which includes waterstops, waterproofing products, grouts, anchors, specialized flooring products. In addition, a wide range of products formulated for repair and refurbishment of spalled concrete are available.

Coverage

Estopatch RSR	0.37 m ² at 5mm thick
----------------------	----------------------------------

Technical Support

Denka offers a comprehensive range of high performance, high quality of product for both new and existing concrete surfaces. In addition, the company offers a technical support package to specifiers, end-users and contractors, as well as on-site technical assistance.

Storage

Estopatch RSR should be stored on pallets in dry conditions. Under these conditions, the product will have a shelf life of 6 months.



Denka Construction Solutions Malaysia Sdn Bhd
(591858-U)

No. 18, Jalan Utas 15/7, Seksyen 15,
40200 Shah Alam, Selangor Darul Ehsan, Malaysia
Tel: +603 5510 8810 Fax: +603 5518 8202

www.denka-cs.com

Limitation of Liability

The information contained in this brochure provides general advice for potential customers for DENKA about the basic properties and characteristics of various DENKA products (hereafter known as "the Product Information"). DENKA makes no warranty or representation as to the entire accuracy or completeness of the Product Information in the brochure. Nothing in this brochure will be deemed to create any express or implied warranty of merchantability, fitness for a particular purpose or infringement of any intellectual property rights. Each user of the Product Information and DENKA products assumes their own responsibility to properly determine the manner and suitability of use of the Product Information and DENKA products in its own operations. The user should exercise proper care in considering the Material Safety Data Sheet, Product Information and any other technical information provided by DENKA including descriptions of the conditions of use, warnings and other cautionary instructions. DENKA reserves the right to change the Product Information from time to time at its discretion and without notice.